



**AGRI • MANAGEMENT
S E R V I C E S**



**GROWTHLAND
Realty & Appraisal**

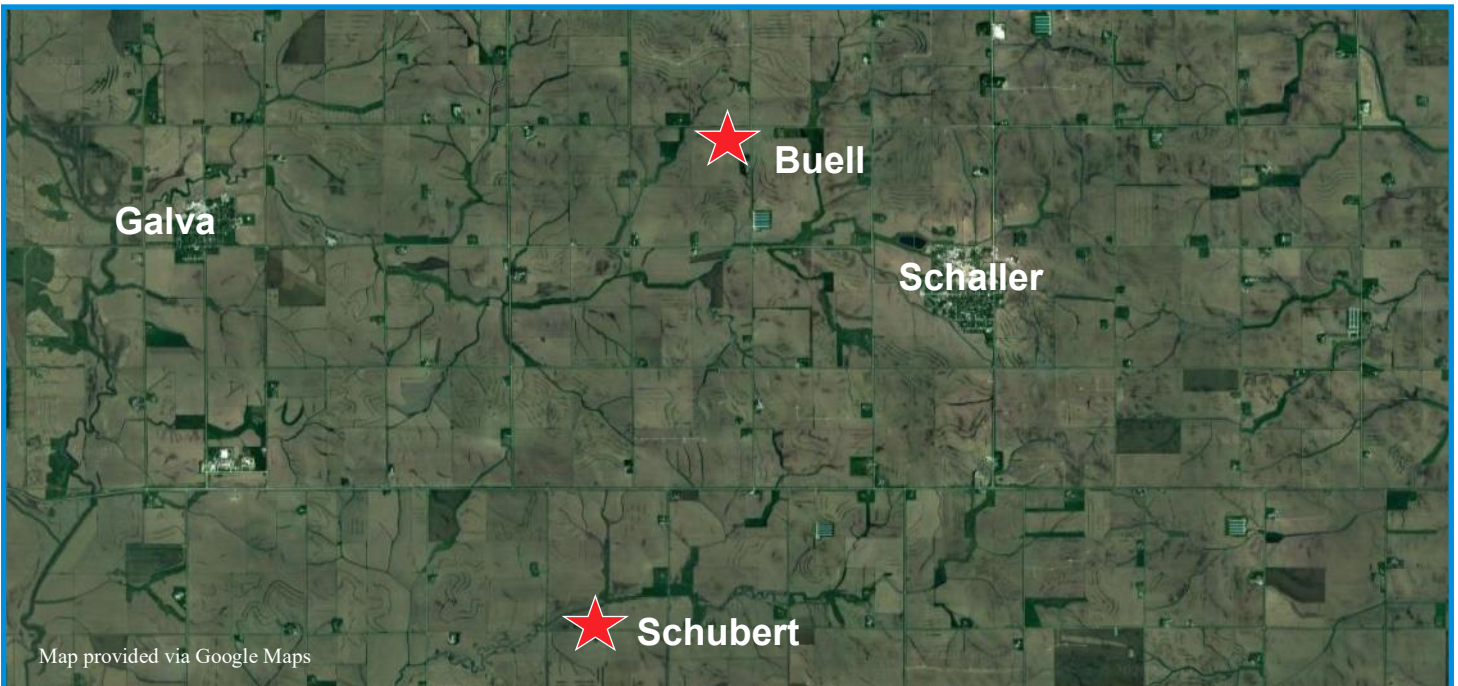
4,998 Pig Spaces

5.66 A M/L

\$1,199,250 or \$240/Space

Swine Wean Finish Sites

Ida & Sac County, IA



Map provided via Google Maps

Agri-Management Services and Affiliates is offering for sale Two Swine Wean to Finish sites in Ida and Sac Counties. Each site has (1) 101' x 200' Buildings with 2 – 50' x 200' rooms with Bio secure entrance with showers and laundry and attached Load out/ Workroom. Owner is willing to sell sites separately.

Sites:

- 1) Buell WF Site - Schaller, Iowa** – 2499 Spaces - \$574,770.00 or \$230 space
Office/Shower update in 2017.
- 2) Schubert WF Site - Galva, Iowa** – 2499 Spaces - \$624,750.00 or \$250 space
Remodel in 2018 – Office, New Feeders, Brooder Heaters, Pen Layout

Both sites have manure easement acres available. Good chance to purchase existing sites in area accessible to several Midwest integrators and packers.

Agri Management Services

Growthland Realty & Appraisal

Dale Kenne, Licensed in IA
5475 Dyer Avenue, Suite 141
Marion, IA 52302
515-368-1313
www.agri-management.com
dale@agri-management.com

The information gathered for this brochure is from sources deemed reliable, but cannot be guaranteed by Agri Management Services, Growthland Realty and Appraisal, or its staff. All acres are considered more or less.



**AGRI • MANAGEMENT
S E R V I C E S**



**GROWTHLAND
Realty & Appraisal**

Buell

2.99 Acre



Site Upgrades —SS Water Cups—2015,
Site Office/Shower/Laundry—2017



**AGRI • MANAGEMENT
S E R V I C E S**



**GROWTHLAND
Realty & Appraisal**

Buell - 2.99 Acre Site

Building Type:	Wean Finish	
Year Built:	2009	
Size:	100'10" x 200' OD	
Number of Rooms:	2	
Pig Spaces:	1,249	1,250
Interior Room Dimensions:	50' x 199'	50' x 199'
Pens per Room:	(10) 19'11" x 47' Pens with PreSort Layout	(10) 19'11" x 47' Pens with PreSort Layout
Office/WR:	Biosecure Entrance/Shower/Office/WR	
Pit Depth:	8'	8'
Ventilation:	Power - Tunnel	Power - Tunnel
Ventilation Controller:	EXPERT VT110	EXPERT VT110
Emergency System(s):	Sensaphone Site Alarm - E Drop on Side Building Curtain	
Ceiling:	White Steel	White Steel
Flooring:	Concrete Gang Slat	Concrete Gang Slat
Feed System:	Model 75/300 Flex TO TT	Model 75/300 Flex TO TT
Feeders:	20 - SS WD Paddle Fdrs	20 - SS WD Paddle Fdrs
Waterers:	SS Cups & WD Fdr	SS Cups & WD Fdr
Load Out:	Attached Covered Truck High Load Out	
Taxes:	\$790.00	
Price:	\$574,770.00	
Price/Space:	\$230.00	

The information gathered for this brochure is from sources deemed reliable, but cannot be guaranteed by Agri Management Services, Growthland Realty and Appraisal, or its staff. All acres are considered more or less.



**AGRI • MANAGEMENT
S E R V I C E S**



**GROWTHLAND
Realty & Appraisal**

Photos



Buell Site



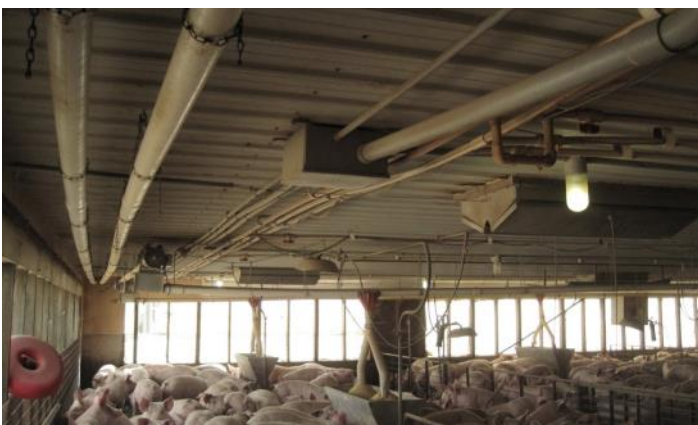
Exterior Side Curtain



Biosecure Office



Room Controllers



Interior View



Room View

The information gathered for this brochure is from sources deemed reliable, but cannot be guaranteed by Agri Management Services, Growthland Realty and Appraisal, or its staff. All acres are considered more or less.



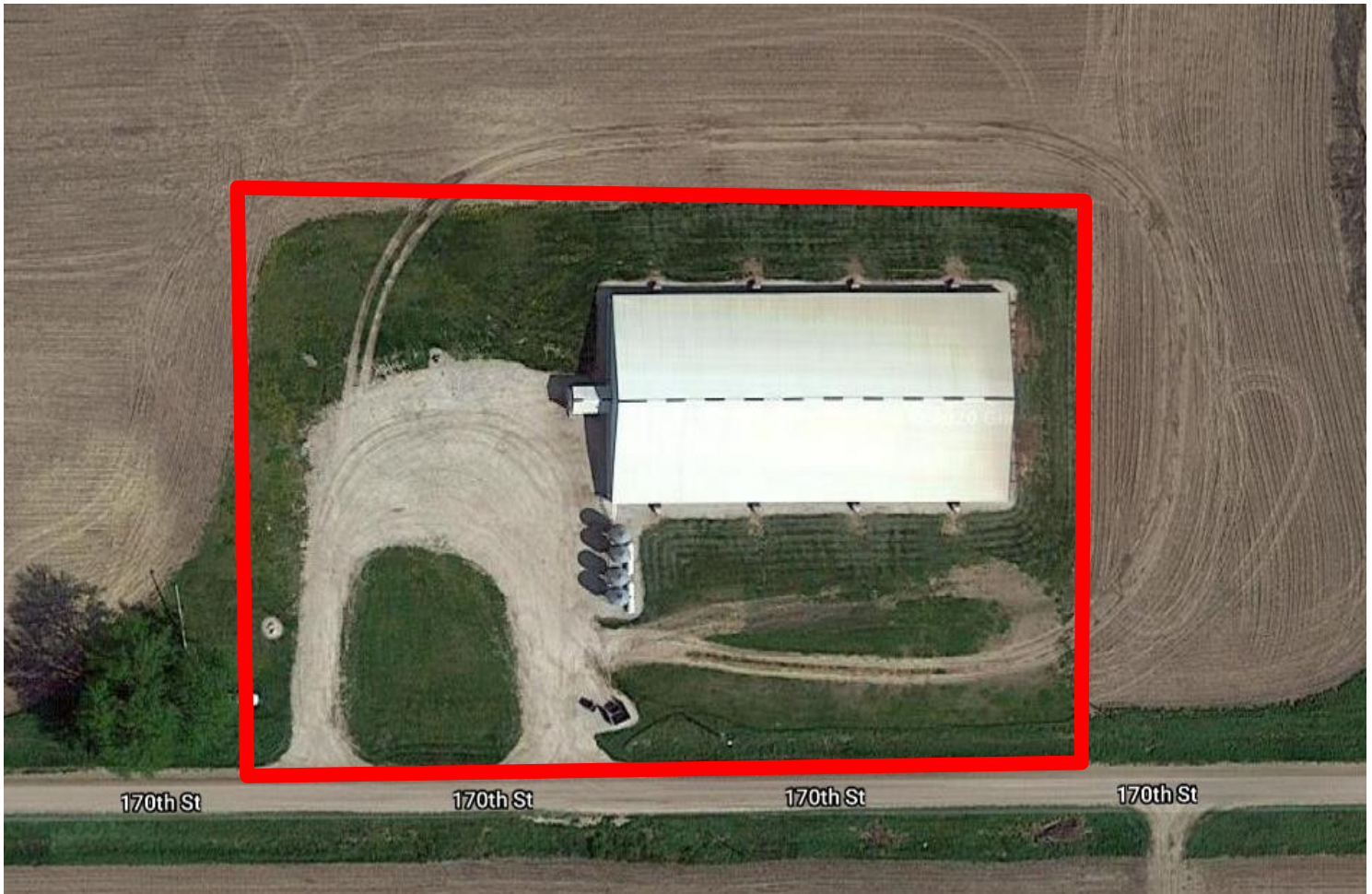
**AGRI • MANAGEMENT
S E R V I C E S**



**GROWTHLAND
Realty & Appraisal**

Schubert

2.67 Acre



Site Upgrades —SS Water Cups—2015,
Site Office/Shower/Laundry—2017,
Room Remodel with SS Feeders, Brooders,
Pen Layout—2018



**AGRI • MANAGEMENT
S E R V I C E S**



**GROWTHLAND
Realty & Appraisal**

Shubert - 2.67 Acre Site

Building Type:	Wean Finish	
Year Built:	2007	
Size:	100'10" x 200' OD	
Number of Rooms:	2	
Pig Spaces:	1,249	1,250
Interior Room Dimensions:	50' x 199'	50' x 199'
Pens per Room:	(10) 19'11" x 47' Pens with PreSort Layout	(10) 19'11" x 47' Pens with PreSort Layout
Office/WR:	Biosecure Entrance/Shower/Office/WR	
Pit Depth:	8'	8'
Ventilation:	Power - Tunnel	Power - Tunnel
Ventilation Controller:	EXPERT VT110	EXPERT VT110
Emergency System(s):	Sensaphone Site Alarm - E Drop on Side Building Curtain	
Ceiling:	White Steel	White Steel
Flooring:	Concrete Gang Slat	Concrete Gang Slat
Feed System:	Model 75/300 Flex TO TT	Model 75/300 Flex TO TT
Feeders:	20 - SS WD Paddle Fdrs	20 - SS WD Paddle Fdrs
Waterers:	SS Cups & WD Fdr	SS Cups & WD Fdr
Load Out:	Attached Covered Truck High Load Out	
Taxes:	\$1,566.00	
Price:	\$624,750.00	
Price/Space:	\$250.00	

The information gathered for this brochure is from sources deemed reliable, but cannot be guaranteed by Agri Management Services, Growthland Realty and Appraisal, or its staff. All acres are considered more or less.



**AGRI • MANAGEMENT
S E R V I C E S**



**GROWTHLAND
Realty & Appraisal**

Photos



Schubert Site



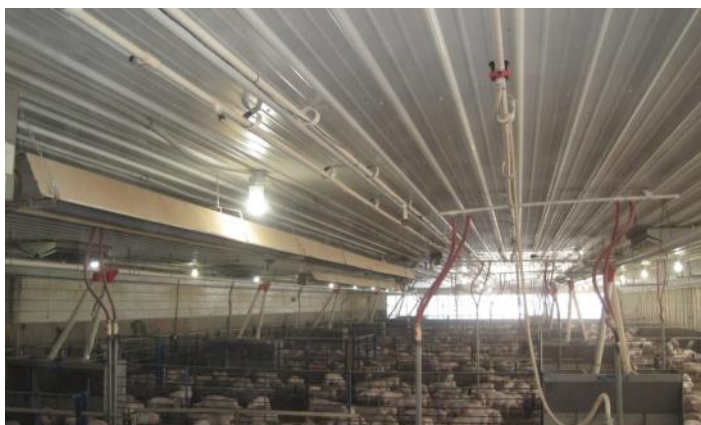
Tunnel Fans



Biosecure Office



Room Controller



Room View



Interior View

The information gathered for this brochure is from sources deemed reliable, but cannot be guaranteed by Agri Management Services, Growthland Realty and Appraisal, or its staff. All acres are considered more or less.



**AGRI • MANAGEMENT
S E R V I C E S**



**GROWTHLAND
Realty & Appraisal**

Notes